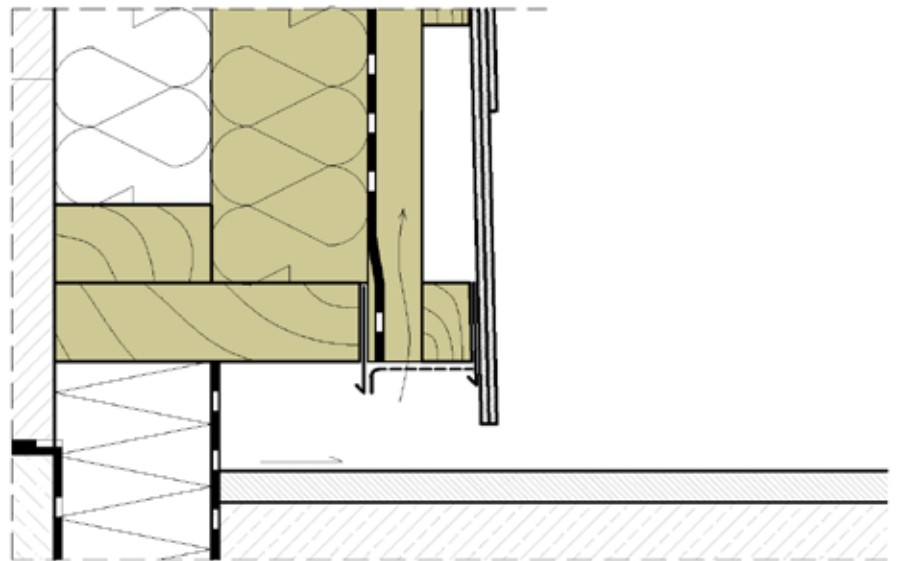
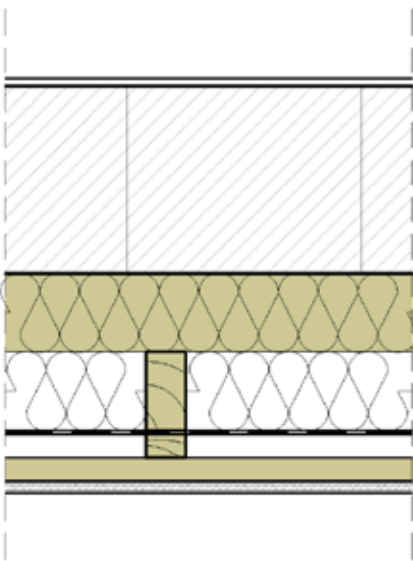
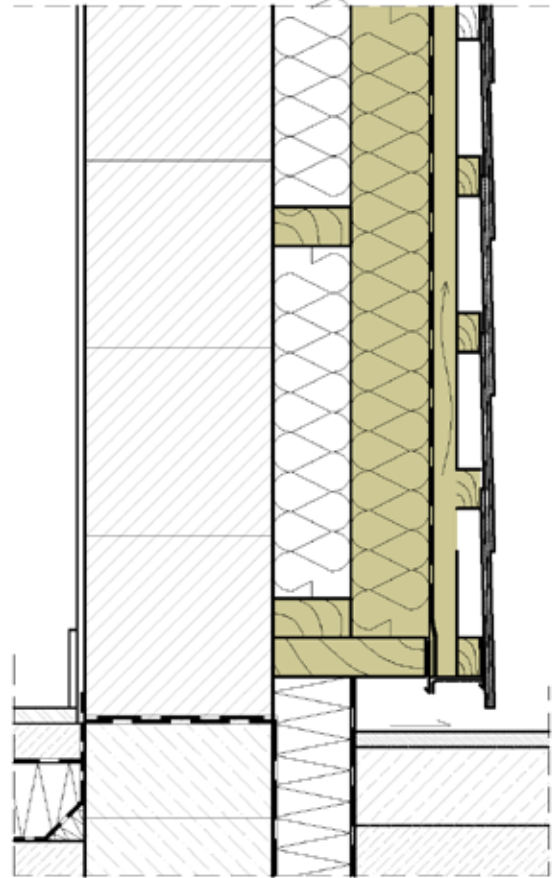
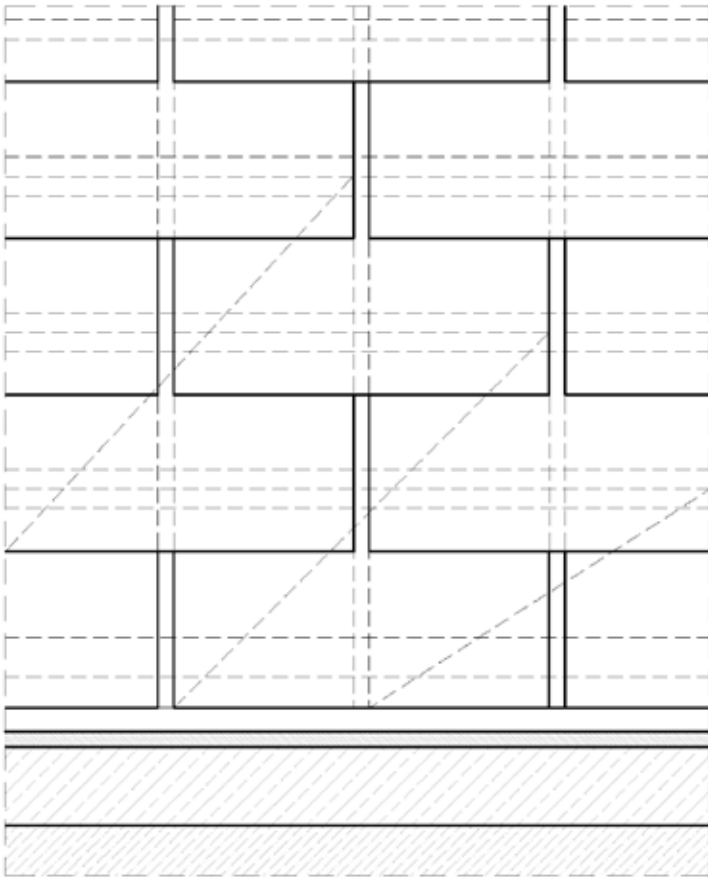




NORTH
AMERICAN
SLATE



SLATE DETAILS

Description

Slate facade - execution of the lower finish on battens

The possible execution in normal case is described. The user is obliged to check the feasibility of the execution under consideration of the concrete local conditions on his own responsibility. Any liability of North American Slate for damages and further claims of any kind is excluded.

NORTH AMERICAN SLATE, LLC
270 Marble Ave
Tel : 802 499 8168
info@northamericanslate.com
northamericanslate.com

Pleasantville, NY 10570
Cell: 802 417 6334

